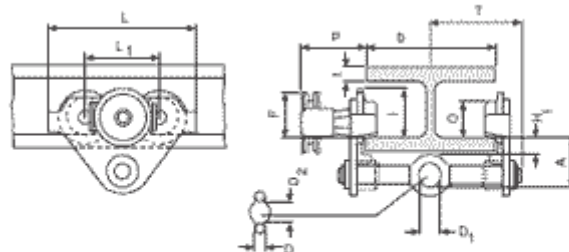


Beam Trolleys

Lifting Equipment Ltd



Model HTP/G
500 - 5.000 kg

Push type Trolley Model LE-HTP (Capacities 500-5000Kg)

Geared type Trolley Model LE-HTG (Capacities 500 - 20,000Kg)

The trolley enables precise placement or easy traversing of large loads by means of either manual or powered hoisting equipment. The trolley wheels are created for a maximum beam profile incline of 14%

Exceptional rolling features as a result of machined steel wheels mounted on pre-lubricated, encapsulated ball bearings, adjustable to suit a variety of beam widths and profiles.

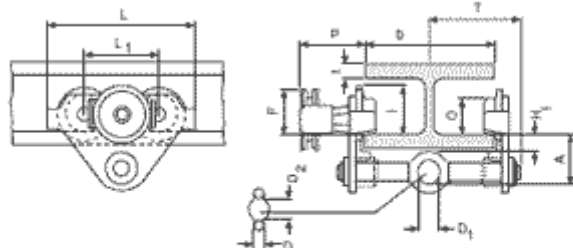
Anti-tilt and wheel fracture support devices in accordance with DIN15018 and the machinery directives are standard.

Adjustments are made by rotating the clevis load bar which in addition ensures the centred positioning of the hoist within the clevis, no creeping to the left or right.

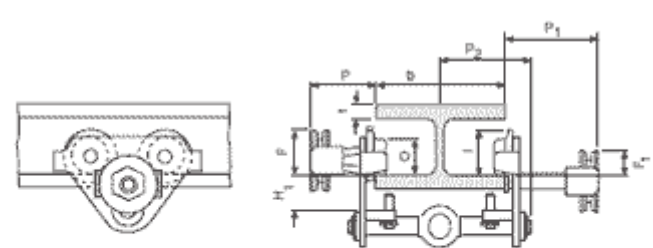
Optional Extras

Buffers may be fitted. Locking device to secure trolley in place on the beam. Rust and acid resisted hand chains

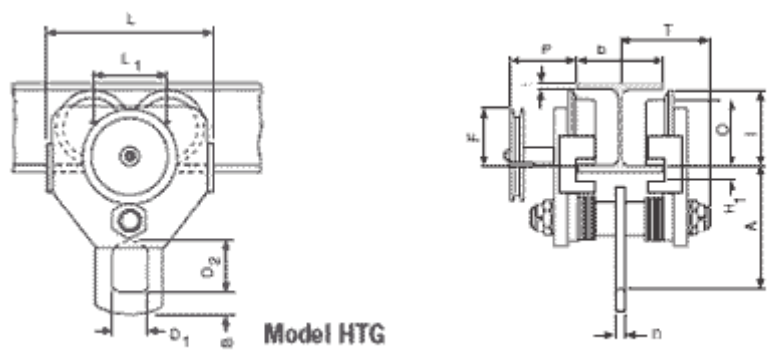
Dimensions	LE-HTP/G 500		LE-HTP/G 1000		LE-HTP/G 2000		LE-HTP/G 3000		LE-HTP/G 5000		HTG 10000	HTG 20000
	A	B	A	B	A	B	A	B	A	B	B	B
A	77,0	92,0	82,5	97,5	98,5	113,5	114,0	129,0	132,5	147,5	276,0	270,0
B	–	–	–	–	–	–	–	–	–	–	52	70
D	16	16	17	17	22	22	26	26	33	33	30	35
D1	25	25	30	30	40	40	48	48	60	60	80	110
D2	30	30	35	35	47	47	58	58	70	70	114	155
F (HTG)	91,5	91,5	91,5	91,5	90,5	90,5	107,5	107,5	149,5	149,5	113,0	113,0
F1	46,0	46,0	46,0	46,0	46,0	46,0	46,0	46,0	45,5	45,5	–	–
H1	30,5	45,5	30,5	45,5	30,5	45,5	30,0	45,0	30,0	45,0	45,0	45,0
I (HTP)	71,5	71,5	71,5	71,5	95,5	95,5	131,0	131,0	142,5	142,5	–	–
I (HTG)	76,5	76,5	76,5	76,5	98,0	98,0	132,5	132,5	148,5	148,5	170,0	170,0
L	260	260	260	260	310	310	390	390	450	450	430	870
L1	130	130	130	130	150	150	180	180	209	209	200	200
L2	–	–	–	–	–	–	–	–	–	–	–	115
O	60	60	60	60	80	80	112	112	125	125	150	150
P (HTG)	110	110	110	110	110	110	110	110	110	110	163	163
P1	168	168	168	168	168	168	168	168	168	168	–	–
P2	146,0	146,0	150,0	150,0	155,0	155,0	160,0	160,0	167,5	167,5	–	–
T	146,0	187,0	150,0	187,0	155,0	189,5	160,0	191,5	167,5	191,5	270,0	270,0



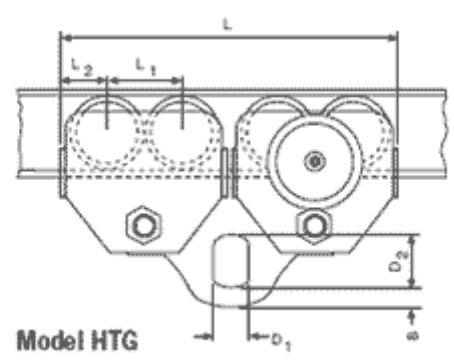
Model HTP/G
500 - 5.000 kg



Model HTP/G with locking device
500 - 5.000 kg



Model HTG
10.000 kg



Model HTG
20.000 kg

Model	Capacity Kg	Size	Beam Flange Width b mm	Max. Flange Thickness t mm	Min. Radius Curve m	Effort at WLL daN	Net weight in Kg			
							HTP	HTG	HTP	HTG
LE HTP/G	500	A	50 - 220	25	0,90	3	8,0	9,7	14,5	16,2
		B	160 - 300	40	0,90	3	10,6	12,6	17,1	19,1
LE HTP/G	1000	A	50 - 220	25	0,90	6	9,0	11,2	17,0	19,2
		B	160 - 300	40	0,90	6	12,0	14,1	20,0	22,1
LE HTP/G	2000	A	66 - 220	25	1,15	7	16,0	18,0	24,0	26,0
		B	160 - 300	40	1,15	7	19,3	21,3	27,3	29,3

LE HTP/G	3000	A	74 - 220	25	1,40	7	32,0	35,4	41,2	44,6
		B	160 - 300	40			35,8	39,2	45,0	48,4
LE HTP/G	5000	A	90 - 220	25	1,80	9	48,0	51,8	58,5	62,3
		B	180 - 300	40			52,2	56,0	62,7	66,5
LE HTG	10000	B	125 - 310	40	1,80	14	-	104,0	-	-
LE HTG	20000	B	125 - 310	40	5,00	29	-	230,0	-	-

CALL US FOR MORE INFORMATION

01384 76961

