

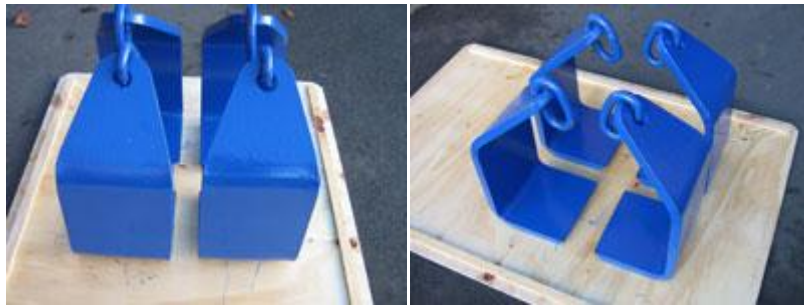
Plate Lifting Dogs

Lifting Equipment Ltd



Lifting Dogs with Spacer Bar / Chain Assemblies

Standard capacities available 2, 3, 5 & 6 tonne. Made to order to suit your individual plate / pack thickness (up to 400mm) Can be supplied either with chain slings or drilled to suit your own slings. Options to have shortening grab hooks fitted to chains supplied painted finish, hard stamped with safe working load & serial / plant number. Fully tested and certified.



Supplied in pairs not as a set of four

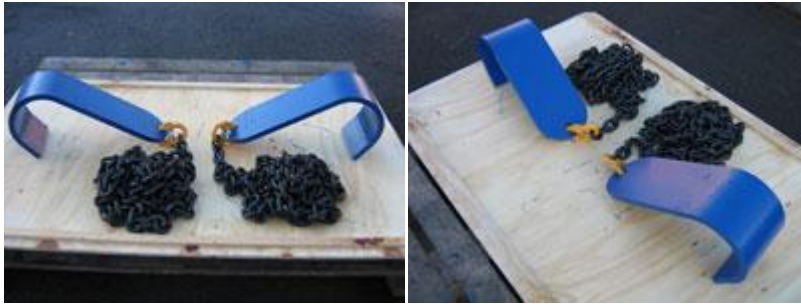
Flat Plate Dogs

Supplied in pairs, manufactured up to 5 tonne capacity and to suit your pack / plate thickness. Options for either rings, shackles or profiled eyes to suit your slings. Painted finish hard stamped with safe working load and serial number. Fully tested and certified.



Round Section Plate Dogs

Safe Working Load up to 10 tonne, supplied in pairs. Painted, hard stamped with the safe working load and ID. Fully tested and certified, we can supply chain slings for use with these or any of our plate lifting dogs if required.



End Dogs

For use with our lifting dogs with spacer bar assemblies. Supplied in pairs c/w chains and grab hooks ideal for use to help stop longer plates from bowing when lifting.

Lifting Beam / Spreader Beam

Supplied painted, marked with safe working load and serial number. Fully tested and certified. Ideal for use with out plate lifting dogs or plate clamps.



CALL US FOR MORE INFORMATION
01384 76961