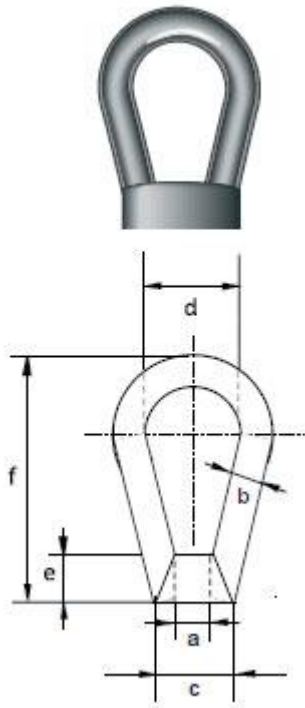
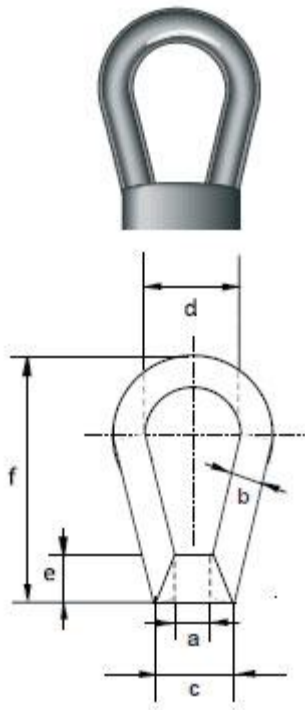


Bownuts Metric and BSW Threads

Lifting Equipment Ltd



Bownuts Metric and BSW Threads



- Safety Factor - $MBL = 5 \times SWL$
- Material - High tensile steel
- Standard - BS3974-part1-1974
- Finish - Self colour, electro galvanising on request
- Certificates - Issued with a works certificate

Metric Coarse Thread

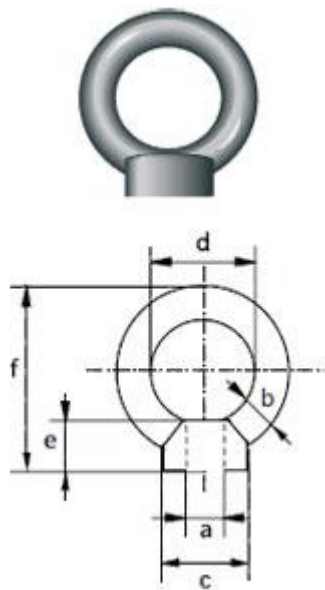
Safe Working Load	Diameter Thread	Diameter Eye	Diameter Base	Diameter Eye Inside	Base Height	Overall Height	Weight Each
Tonnes	a (mm)	b (mm)	c (mm)	d (mm)	e (mm)	f (mm)	Kg
0.23	8	10	32	25	16	64	0.15
0.36	10	10	32	25	16	64	0.15
0.53	12	12	38	30	17	73	0.27
1.01	16	12	38	30	17	73	0.29
1.58	20	14	45	40	25	102	0.50

2.28	24	17	50	50	29	124	0.90
3.65	30	26	70	75	29	149	2.20
5.34	36	26	70	75	29	149	2.20

BSW Thread

Safe Working Load	Diameter Thread	Diameter Eye	Diameter Base	Diameter Eye Inside	Base Height	Overall Height	Weight Each
cwts	a (inch)	b (mm)	c (mm)	d (mm)	e (mm)	f (mm)	Kg
0.25	3/8	10	32	25	16	64	0.15
0.50	1/2	12	38	30	17	73	0.27
0.80	5/8	12	38	30	17	73	0.27
1.20	3/4	14	45	40	25	102	0.58
1.60	7/8	14	45	40	25	102	0.58
2.20	1	17	50	50	29	124	0.90
3.50	1 1/4	26	70	75	29	149	2.20
4.75	1 1/2	26	70	75	29	149	2.20

EyenuTs Metric and BSW Threads



- Materials - High tensile steel
- Finish - Self coloured as standard, can be Electro-galvanised as extra upon request
- Safety Factor - MBL equal to five times safe working load
- Certificates - Issued with a works certificate as standard

Metric Coarse Thread

Safe Working Load	Diameter Thread	Diameter Eye	Diameter Base	Diameter Eye Inside	Base Height	Overall Height	Weight Each
Tonnes	a (mm)	b (mm)	c (mm)	d (mm)	e (mm)	f (mm)	Kg
0.30	10	13	29	44	22	78	0.25
0.50	12	13	29	44	22	78	0.26
0.80	16	13	29	44	22	78	0.27
1.20	20	16	39	49	26	84	0.45
2.20	24	19	44	52	38	111	0.79

BSW Thread

Safe Working Load	Diameter Thread	Diameter Eye	Diameter Base	Diameter Eye Inside	Base Height	Overall Height	Weight Each
cwts	a (inch)	b (mm)	c (mm)	d (mm)	e (mm)	f (mm)	Kg
5	3/8	13	29	44	22	78	0.24
10	1/2	13	29	44	22	78	0.25
16	5/8	13	29	44	22	78	0.26
24	3/4	16	39	49	26	84	.45
32	7/8	16	39	49	26	84	0.45
44	1	19	44	52	38	111	0.79

Basic Tips For Using Eyebolts Safely

- Make sure certain markings are legible
- Frequently examine for defects and never used if observed (i.e. nicks, gouges, cracks)
- Threads must be clean and undamaged
- Never fix or reshape an eyebolt via welding/heating or bending
- Never try to grind or machine an eyebolt
- Never exceed the WLL of the eyebolt
- Always make certain the eyebolts thread is compatible with the tapped hole
- Ensure the collar is completely seated when hand-tight
- Never reeve slings through the eyes, links or shackles attached to pairs of eyebolts
- Never shock load
- Never force hooks, etc into eye, they should fit without restraint
- Never use eyebolts for angular loading
- Correctly align the eye

- WLL are valid only for in-line pull. The WLL must be reduced for non-axial loading.

CALL US FOR MORE INFORMATION

01384 76961